
AB-Edit

" The Ad Pen
for the Internet "

WE
integrate your company's name,
logo and much more into an
exclusive version of AB-Euro. *

YOU
distribute that version to
your customers for free,
e.g. as a free download
from your website.

*) Fixed Prices!



A MEMBER OF
www.**soft-giveaway**.de
COLLECTION

Oliver Grahl Software Design
<http://www.o-grahl.com/>

AB-Edit Manual

Contents

I Welcome!	3
II What is AB-Edit?	3
III AB-Edit Features	3
1 Run & Exit AB-Edit	3
Run AB-Edit	3
Exit AB-Edit	4
Tip: Start Parameters	4
Procedures	4
How to run AB-Edit with Start Parameters	4
How to create a desktop shortcut to AB-Edit with Start Parameters	5
2 The AB-Edit Windows	5
Overview: Windows	5
The Menu Windows	5
The Editor Window	6
3 Menu Commands	7
Overview: Menu Commands	7
Menu File	8
Menu Edit	8
Menu View	10
Menu Help	10
Tip: Keyboard Shortcuts	11
Procedures	11
Customization of Menus and Toolbars	11
How to move toolbars	12
How to hide a toolbar	12
How to show a hidden toolbar	12
How to create a new toolbar	13
How to modify toolbar items	13
How to change toolbar options	14
4 Features	14
Overview: Features	14
Indent and Outdent	15
Bookmarks	15
Search	15
Replace	16
Goto	17
File Format and Encoding	17
Print	18
Syntax Highlighting	18
Procedures	19
How to set bookmarks	19
How to go to a bookmark	19
How to save a file in a certain format	19
How to save a file in a certain encoding	19
5 Options	20
Overview: Options	20
IV Typical Procedures	20

1	How to save a file in a certain format	20
2	How to set bookmarks	20
3	How to move toolbar items	21
V	Tips and Tricks	21
1	Start Parameters	21
2	Keyboard Shortcuts	22
VI	Installation, Uninstallation, Updates	23
1	Install AB-Edit	23
2	Uninstall AB-Edit	23
3	Obtaining Updates for AB-Edit	23
4	Installing Updates for AB-Edit	23
VII	Register, Order	24
1	Terms of License	24
2	Prices	25
VIII	Contact, Product Support	25
1	Product Support	25
2	Contact	25
3	Information on the WWW	26
	Index	27

1 Welcome!

Welcome to AB-Edit!

The AB-Edit Online Help contains a lot of information on AB-Edit. Starting with notes on Installation and Uninstallation of AB-Edit. Continuing with tips on Starting and Exiting AB-Edit.

▶ A perfect introduction is the topic: What is AB-Edit?

In this online help, you will find complete step-by-step references for all Features and Options of AB-Edit. Especially, the help contains descriptions and pictures of the AB-Edit features, like e.g. on the Windows, the Editor and the Menu Commands.

Information on Product Support and ways to Contact the vendor make this online application complete.

We have spent a lot of work into authoring this online help, because we want to make the start and daily work with our product as comfortable as possible. If you have any suggestions or hints regarding this help application, please do not hesitate to contact us. Currently this online help is not written by native english speakers, so please be patient with our language and let us know if you have any notes on this.

Current information on AB-Edit can be found on the internet on the AB-Edit Website.

2 What is AB-Edit?

AB-Edit

- AB-Edit is the comfortable text editor for work with multiple documents. Lots of usefull features, i.e. Drag'n'Drop, unlimited Undo/Redo, colored Syntax Highlighting for more than 25 file types, Search & Replace with regular expressions, Code Templates, automatic Line Indention, Bookmarks, Print with Syntax Highlighting. Edit your Windows, Unix or Mac files in ANSI, Unicode or UTF-8 encoding. Fast and easy to use.
- **AB-Edit is also "The Ad Pen for the Internet":**
 - ▶ WE integrate your company's name, logo and much more into an exclusive version of AB-Euro.
 - ▶ YOU distribute that version to your customers for free, e.g. as a free download from your website.Fixed Prices!

Here you will find further information on the AB-Edit Features:

- Welcome to AB-Edit!
- The AB-Edit Windows
- The AB-Edit Features
- AB-Edit Options
- AB-Edit on the WWW

AB-Edit is free.

You may use the product according to the Terms of License.

3 AB-Edit Features

3.1 Run & Exit AB-Edit

3.1.1 Run AB-Edit

How to run AB-Edit:

- Execute the link to AB-Edit that has been generated in your start menu under *Programs / AB-Edit* during installation.

3.1.2 Exit AB-Edit

How to exit AB-Edit:

- Select *File, Exit* in the AB-Edit Menu.

3.1.3 Tip: Start Parameters

With start parameters it is possible to execute certain actions or features of AB-Edit directly at program start, without the need of any user interaction. This way it is for example possible to execute commands through links from the desktop which would normally need the use of the AB-Edit Menu

These parameters are available:

- **<Files> [/readonly]**

Opens the files specified in <Files>. If the file paths contain blanks, every path has to be set into quotation marks. The parameter /readonly is optional and opens the files in "readonly" mode.
Example: AB-Edit.exe "C:\My Documents\Hello.txt" "C:\My Documents\World.txt"

- **/new**

Creates a new, empty file.

- **/open**

Shows the "Open file" dialog.

- **/newinstance**

Opens a new instance of AB-Edit, even if there is a running instance of AB-Edit.

How to use start parameters:

- How to run AB-Edit with Start Parameters
- How to create a desktop shortcut to AB-Edit with Start Parameters

Note

- In case that AB-Edit is not running yet (has not been started), start parameters will be executed immediately.
- In case that AB-Edit is already running (has been started), it is possible to restart AB-Edit with start parameters again. The parameters will be transferred to the running program to be executed.

Syntax:

```
AB-Edit.exe [[<Files> [/readonly]] | [/new] | [/open]]
```

3.1.4 Procedures

3.1.4.1 How to run AB-Edit with Start Parameters

How to run AB-Edit with Start Parameters:

1. On the Windows taskbar, select *Start, Run...*
2. Enter the complete path to AB-Edit and append the start parameters after a blank as you wish.
Example: *C:\Program Files\AB-Edit\AB-Edit.exe /Options*
4. Press *OK*.

3.1.4.2 How to create a desktop shortcut to AB-Edit with Start Parameters

How to create a desktop shortcut to AB-Edit with Start Parameters:

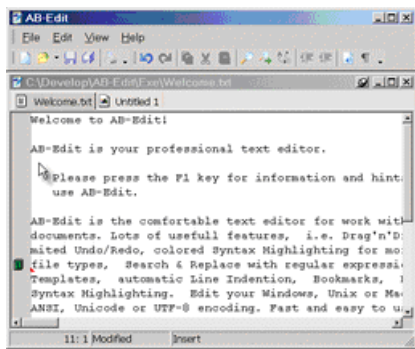
1. Reduce all visible program windows to get access to the desktop. Right-click on the Windows taskbar and select *Minimize All Windows* to accomplish that.
2. Right-click on the desktop. From the context menu, select *New, Shortcut*.
3. Enter the complete path to AB-Edit as the shortcut's target and append the start parameters after a blank as you like. Example: `C:\Program Files\AB-Edit\AB-Edit.exe /Options`
5. Press *Next*.
6. Enter a name for the new shortcut. Example: *AB-Edit Options*
8. Press *Next*. The new shortcut will be created on your desktop. You can run the shortcut by double-clicking.

3.2 The AB-Edit Windows

3.2.1 Overview: Windows

The main parts of AB-Edit:

- AB-Edit is built of two main windows: The Menu Window and the Editor Window.



Note

- To separate both windows and position them on the screen, click the *Undock* button in the Editor Window's title bar.



3.2.2 The Menu Windows

The parts of the Menu Window

The Menu Window contains the AB-Edit Menu and toolbars. It is always visible, no matter if a file is loaded into the editor or not. The menu offers access to the central features of the editor. Some of these features are also accessible by toolbar buttons.



Note

- Right-click on the menu or the toolbars to customize the menu items or toolbar buttons:



Read more about it in the topic Customization of Menu and Toolbars.

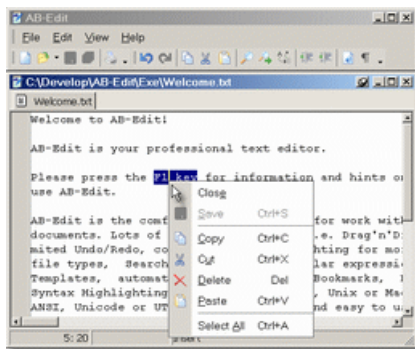
3.2.3 The Editor Window

The parts of the Editor Window

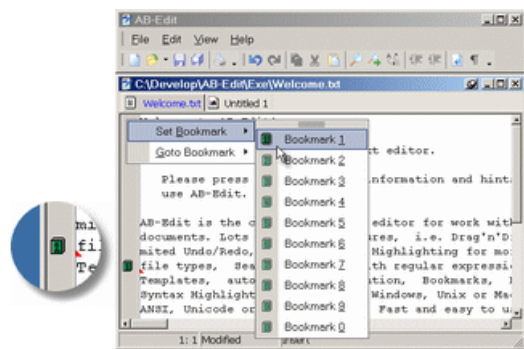
- Right below the Editor Window's title bar, you see a number of tabs displaying the different files opened for editing. By clicking on a tab, the associated file is brought to the foreground. With Drag'n'Drop you can change the order of the tabs at any time.



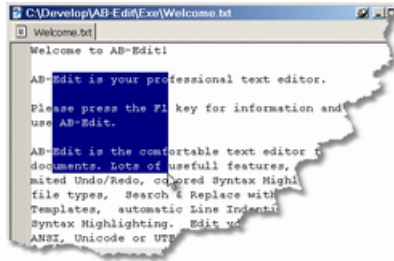
- By right-clicking inside the editor, you will get a context menu with some important commands for text editing. More information can be found in the description of the AB-Edit Menu.



- On the editor's left side, you will find a gray bar. Any defined bookmarks get displayed inside that bar. By right-clicking on the bar, you get a context menu for setting and going to bookmarks.



- Selected text parts can be moved or copied (by holding down the CTRL key) via drag'n'drop.
- To select a block inside the text, hold down the ALT key while selecting.

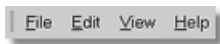


3.3 Menu Commands

3.3.1 Overview: Menu Commands

The parts of the Menu Window

The Menu Window contains the AB-Edit Menu and toolbars. It is always visible, no matter if a file is loaded into the editor or not. The menu offers access to the central features of the editor. Some of these features are also accessible by toolbar buttons.



Note

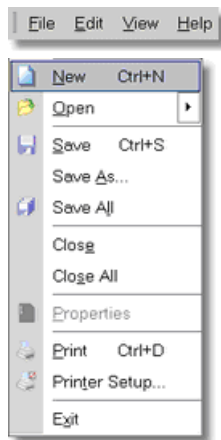
- Right-click on the menu or the toolbars to customize the menu items or toolbar buttons:



Read more about it in the topic Customization of Menu and Toolbars.

3.3.2 Menu File

The Menu *File*:

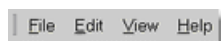


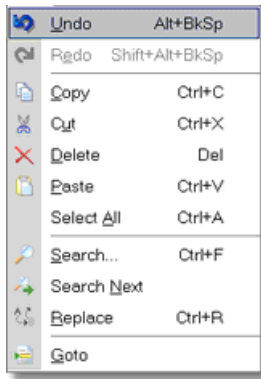
Description of the menu items:

- **New**
Creates a new, empty file.
- **Open...**
Displays the dialog to open one or multiple files.
Click the arrow on the right side to show a list of recently used files and to reopen one of these files.
- **Save**
Saves the current file.
- **Save As...**
Saves the current file under a different name.
You can select the File Format and Encoding when saving.
- **Save All**
Saves all files that have been modified.
- **Close**
Closes the current file.
- **Close All**
Closes all open files.
- **Print...**
Displays the Print dialog to print the current file.
- **Printer Setup...**
Displays the Windows dialog for Printer Setup.
- **Exit**
Exits AB-Edit.

3.3.3 Menu Edit

The Menu *Edit*:

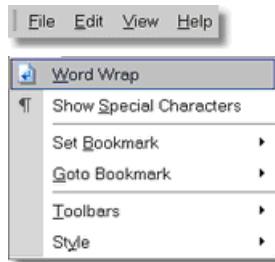


**Description of the menu items:**

- **Undo**
Undo the last change. There is no restriction of the number of actions that can be undone, you may undo all changes since opening the file.
- **Redo**
Redo a previously undone action.
- **Copy**
Copies the selected text to the clipboard.
- **Cut**
Cuts the selected text and places the text to the clipboard.
- **Delete**
Deletes the selected text.
- **Paste**
Pastes the text from the clipboard at the current cursor position.
- **Select All**
Selects the whole file content.
- **Search...**
Displays the Search dialog for text search inside the current file.
- **Search Next**
Repeats the last search/replace action on the current file.
- **Replace...**
Displays the Replace dialog for search and replace text inside the current file.
- **Goto...**
Displays the Goto dialog to jump to a certain point in the current file.

3.3.4 Menu View

The Menu View:

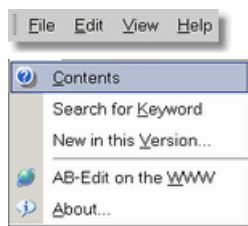


Description of the menu items:

- **Word Wrap**
Activate this setting for automatic wrapping of long lines in the editor window. The automatically wrapped lines will be saved in full length anyway.
- **Show Special Characters**
Use this setting to display non-printable characters (line breaks, tabs, blanks) by special characters in the editor.
- **Set Bookmark**
Sets one of 10 possible Bookmarks at the current position in the editor.
- **Goto Bookmark**
Jumps to the position where a Bookmark has been set before.
- **Toolbars**
Show or hide certain Toolbars. Press *Customize* to customize the content of the menu or the toolbars.
For more information read the topic Customization of Menus and Toolbars.
- **Style**
Select a style for the user interface look-and-feel.

3.3.5 Menu Help

The Menu Help:



Description of the menu items:

- **Contents**
Displays the AB-Edit Online Help.
- **Search for Keyword**
Displays a window to enter a keyword and searches the whole online help for this keyword.
- **New in this Version...**
Displays a list of changes and improvements of the current AB-Edit version (Version History).
- **AB-Edit on the WWW**

Connects with the AB-Edit Website.

- **About...**

Displays the window *About AB-Edit*, with information on license and current version of the product.

3.3.6 Tip: Keyboard Shortcuts

Common

- F12 Toggle between menu window and editor

Text Editing

- ALT-BACK Undo
- SHIFT-ALT-BACK Redo
- CTRL-C Copy
- CTRL-X Cut
- DEL Delete
- CTRL-V Paste
- CTRL-A Select All
- CTRL-SHIFT-I Indent
- CTRL-SHIFT-U Outdent

Search and Replace

- CTRL-F Search
- CTRL-R Replace
- F3 Search Next

Navigation

- CTRL-G Goto
- CTRL-SHIFT-1 Setze Bookmark 1
- CTRL-SHIFT-2 Setze Bookmark 2
- ...
- CTRL-SHIFT-0 Setze Bookmark 10
- CTRL-1 Gehe zu Bookmark 1
- CTRL-2 Gehe zu Bookmark 2
- ...
- CTRL-0 Gehe zu Bookmark 10

File Operations

- CTRL-N New
- CTRL-S Save
- CTRL-D Print

3.3.7 Procedures

3.3.7.1 Customization of Menus and Toolbars

How to customize menus and toolbars:

- How to modify toolbar items
- How to change toolbar options
- How to move toolbars
- How to hide a toolbar
- How to show a hidden toolbar
- How to create a new toolbar

3.3.7.2 How to move toolbars

How to move toolbars:

- There is a "Grip" at the left end of each toolbar to move the bar.
- Click on that "Grip", hold the mouse button down and move the toolbar to any place.

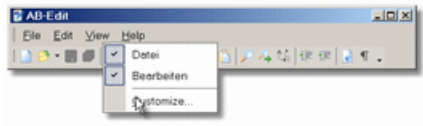
3.3.7.3 How to hide a toolbar

How to hide a toolbar:

1. In the Menu, press View, Toolbars.
2. Uncheck the toolbar, you wish to hide.

Note

- You can right-click on a toolbar instead of step 1:



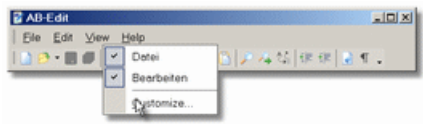
3.3.7.4 How to show a hidden toolbar

How to show a hidden toolbar:

1. In the Menu, press View, Toolbars.
2. Click on the name of the toolbar you wish to show.

Note

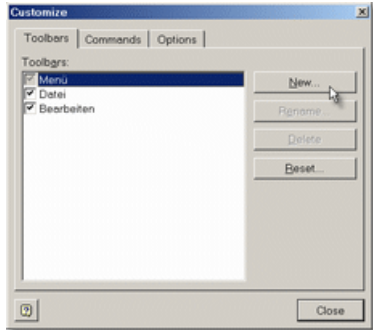
- You can right-click on a toolbar instead of step 1:



3.3.7.5 How to create a new toolbar

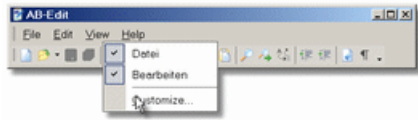
How to create a new toolbar:

1. In the Menu, press View, Toolbars, Customize.
2. Press *New* to create a new toolbar.



Note

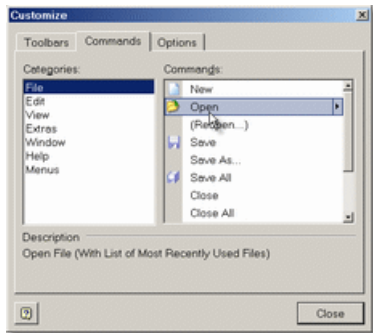
- You can right-click on a toolbar instead of step 1:



3.3.7.6 How to modify toolbar items

How to modify toolbar items:

1. In the Menu, press View, Toolbars, Customize.
2. Select the tab *Commands*.
3. Drag symbols from the Customize dialog onto a toolbar to add them or drag symbols out of a toolbar to remove them.

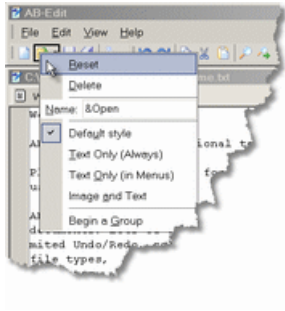


Note

- You can right-click on a toolbar instead of step 1:



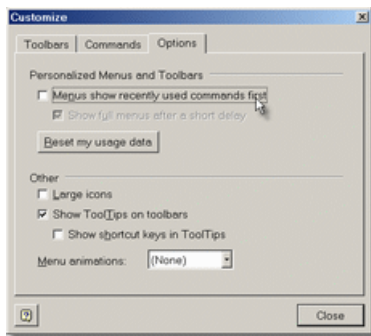
- Right-click on an item to set its enhanced properties:



3.3.7.7 How to change toolbar options

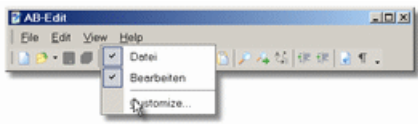
How to change toolbar options:

1. In the Menu, press View, Toolbars, Customize.
2. Select the tab *Options* and set your preferences.



Note

- You can right-click on a toolbar instead of step 1:



3.4 Features

3.4.1 Overview: Features

Overview on all Menu Commands:

- You will find information on most of the AB-Edit features in the documation of the AB-Edit Menu.

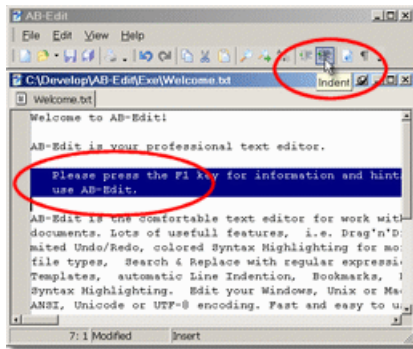
Special Features:

- Indent and Outdent
- Bookmarks
- Search, Replace, Goto
- File Format and Encoding
- Print
- Syntax Highlighting

3.4.2 Indent and Outdent

How to indent or outdent text:

- Select the lines or a text block you wish to in- or outdent.
- Press the button *Indent* or *Outdent* to change the indentation in steps of one character.



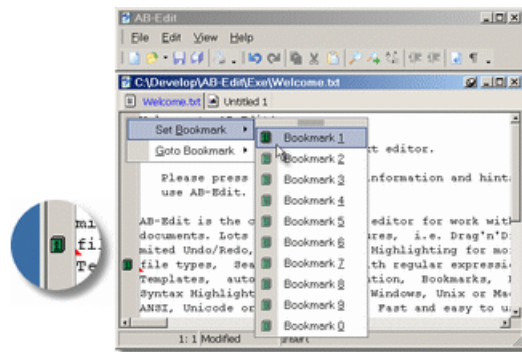
Note

- You may also press the key combination CTRL-SHIFT-I to indent and CTRL-SHIFT-U for outdent.

3.4.3 Bookmarks

How to work with Bookmarks:

- You can set up to ten bookmarks at any position in a document and jump to that bookmark later.
- Bookmarks will get displayed by a "book" glyph in the gray bar on the left of the editor.



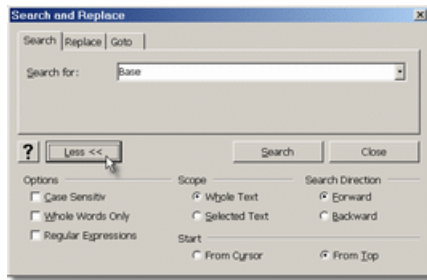
Procedures

- How to set bookmarks
- How to go to a bookmark

3.4.4 Search

How to search for text:

- In the Menu, select Edit, Search.
- Enter the text to search and press *Search*.



Note

- For an enhanced search, press >> *More*. You may set additional options for the search there.
- To repeat the last search, use the menu command Edit, Search Next.

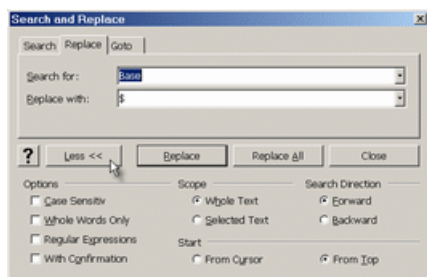
Description of the Options:

- **Case Sensitive**
Activate this option for a case-sensitive search.
- **Whole Words Only**
Activate this option to search for whole words only, not for appearances of the search text inside another, longer word.
- **Regular Expressions**
Activate this option if you want to use regular expressions in your search text (for power users).
- **Scope: Whole Text or Selected Text**
Specify if the whole document or only the selected text should be searched.
- **Search Direction: Forward or Backward**
Specify if the search should be done from top to bottom or from bottom to top inside the search scope.
- **Start: From Cursor or From Top**
Specify if the search should start at the beginning of the document or at the current cursor position.

3.4.5 Replace

How to replace text:

- In the Menu, select Edit, Replace.
- Enter the text to search and the text to replace and press *Replace* to replace the first occurrence of the search text or *Replace All* to replace all occurrences in the current document.



Note

- For an enhanced search, press >> *More*. You may set additional options for the search there.
- To repeat the last search and replace action, use the menu command Edit, Search Next.

Description of the Options:

- **Case Sensitive**
Activate this option for a case-sensitive search.

- **Whole Words Only**
Activate this option to search for whole words only, not for appearances of the search text inside another, longer word.
- **Regular Expressions**
Activate this option if you want to use regular expressions in your search text (for power users).
- **With Confirmation**
Activate this option if you want to confirm each replacement.
- **Scope: Whole Text or Selected Text**
Specify if the whole document or only the selected text should be searched.
- **Search Direction: Forward or Backward**
Specify if the search should be done from top to bottom or from bottom to top inside the search scope.
- **Start: From Cursor or From Top**
Specify if the search should start at the beginning of the document or at the current cursor position.

3.4.6 Goto

How to go to a certain position in the document:

- In the Menu, select Edit, Goto.
- Choose if you want to jump to a certain line number or to a Bookmark.
- Enter the line number or the number of the bookmark.
- Press *Goto*.



3.4.7 File Format and Encoding

How to work with different File Formats and Encodings:

- AB-Edit supports using different file formats (depending on the kind of line breaks: Windows, Unix, Mac) and file encodings (ANSI, Unicode, UTF-8).
- On opening a file, AB-Edit will automatically determine which format and encoding is applying to that file.
- On saving a file, AB-Edit will use the same format and encoding.

Procedures

- How to save a file in a certain format
- How to save a file in a certain encoding

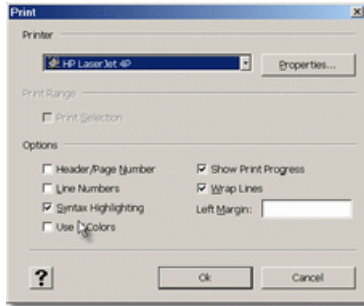
Note

- To change the format or encoding of an existing file, you have to open the file and save the file with the new format or encoding by using the File, Save As command.

3.4.8 Print

How to print a file:

- In the Menu, press File, Print.
- Select the printer you like to use.
- Set any options (see below)
- Press *Ok*.



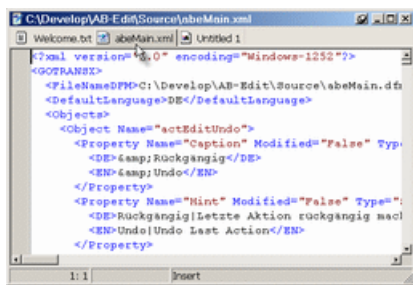
Description of the Options:

- **Header/Page number**
Prints the file name and page numbers.
- **Line Numbers**
Prints line numbers on the left side.
- **Syntax Highlighting**
Uses the Syntax Highlighting of the editor on the printout.
- **Use Colors**
Uses colors when printing, if needed.
- **Show Progress**
Displays a print progress dialog while printing with the possibility to cancel the print job.
- **Wrap Lines**
Wraps long lines.
- **Left Margin**
Creates an empty margin on the left side.

3.4.9 Syntax Highlighting

How to use the AB-Edit Syntax Highlighting:

- AB-Edit recognizes which syntax highlighting it should use for a certain file according to its file extension and displays key words of that syntax in different colors or font styles.



3.4.10 Procedures

3.4.10.1 How to set bookmarks

How to set bookmarks:

- In the Menu, press View, Set Bookmark.
- or
- Right-click on the gray bar on the editor's left and press *Set Bookmark*
- or
- Press the Keyboard Shortcut CTRL-SHIFT-1 for the first, CTRL-SHIFT-2 for the second bookmark, etc.

3.4.10.2 How to go to a bookmark

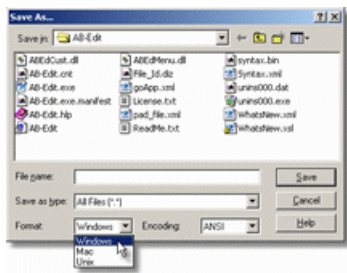
How to go to a bookmark:

- In the Menu, press View, Goto Bookmark.
- or
- Right-click on the gray bar on the editor's left and press *Goto Bookmark*
- or
- Press the Keyboard Shortcut CTRL-1 for the first, CTRL-2 for the second bookmark, etc.

3.4.10.3 How to save a file in a certain format

How to save a file in a certain format:

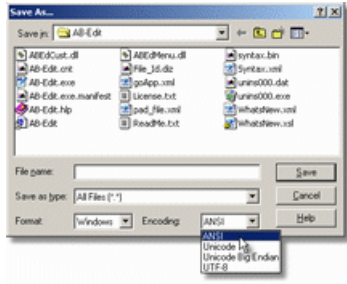
1. In the Menu, press File, Save As.
2. Choose a filename and specify the format.



3.4.10.4 How to save a file in a certain encoding

How to save a file in a certain encoding:

1. In the Menu, press File, Save As.
2. Choose a filename and specify the encoding.

**Note**

- This feature is not supported under Windows 9x/Me, as these operating systems don't support encodings.

3.5 Options

3.5.1 Overview: Options

Note:

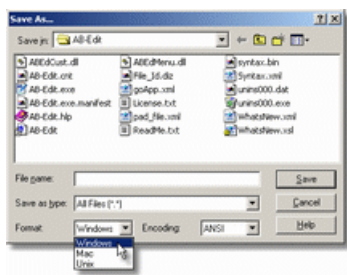
This feature is not available in free versions.

4 Typical Procedures

4.1 How to save a file in a certain format

How to save a file in a certain format:

1. In the Menu, press File, Save As.
2. Choose a filename and specify the format.



4.2 How to set bookmarks

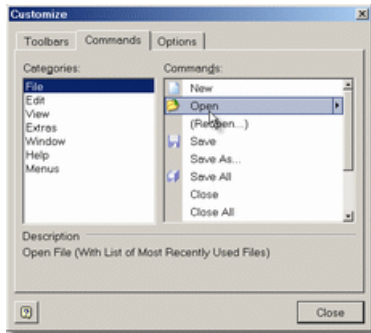
How to set bookmarks:

- In the Menu, press View, Set Bookmark.
- or
- Right-click on the gray bar on the editor's left and press *Set Bookmark*
- or
- Press the Keyboard Shortcut CTRL-SHIFT-1 for the first, CTRL-SHIFT-2 for the second bookmark, etc.

4.3 How to move toolbar items

How to modify toolbar items:

1. In the Menu, press View, Toolbars, Customize.
2. Select the tab *Commands*.
3. Drag symbols from the Customize dialog onto a toolbar to add them or drag symbols out of a toolbar to remove them.

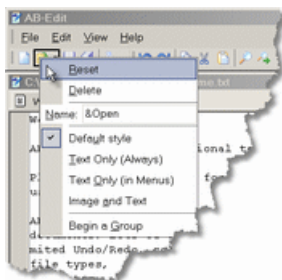


Note

- You can right-click on a toolbar instead of step 1:



- Right-click on an item to set its enhanced properties:



5 Tips and Tricks

5.1 Start Parameters

With start parameters it is possible to execute certain actions or features of AB-Edit directly at program start, without the need of any user interaction. This way it is for example possible to execute commands through links from the desktop which would normally need the use of the AB-Edit Menu

These parameters are available:

- **<Files> [/readonly]**

Opens the files specified in <Files>. If the file paths contain blanks, every path has to be set into quotation marks. The parameter /readonly is optional and opens the files in "readonly" mode.
Example: AB-Edit.exe "C:\My Documents\Hello.txt" "C:\My Documents\World.txt"

- **/new**

Creates a new, empty file.

- **/open**

Shows the "Open file" dialog.

- **/newinstance**

Opens a new instance of AB-Edit, even if there is a running instance of AB-Edit.

How to use start parameters:

- How to run AB-Edit with Start Parameters
- How to create a desktop shortcut to AB-Edit with Start Parameters

Note

- In case that AB-Edit is not running yet (has not been started), start parameters will be executed immediately.
- In case that AB-Edit is already running (has been started), it is possible to restart AB-Edit with start parameters again. The parameters will be transferred to the running program to be executed.

Syntax:

```
AB-Edit.exe [[<Files> [/readonly]] | [/new] | [/open]]
```

5.2 Keyboard Shortcuts

Common

- F12 Toggle between menu window and editor

Text Editing

- ALT-BACK Undo
- SHIFT-ALT-BACK Redo
- CTRL-C Copy
- CTRL-X Cut
- DEL Delete
- CTRL-V Paste
- CTRL-A Select All
- CTRL-SHIFT-I Indent
- CTRL-SHIFT-U Outdent

Search and Replace

- CTRL-F Search
- CTRL-R Replace
- F3 Search Next

Navigation

- CTRL-G Goto
- CTRL-SHIFT-1 Setze Bookmark 1
- CTRL-SHIFT-2 Setze Bookmark 2
- ...
- CTRL-SHIFT-0 Setze Bookmark 10
- CTRL-1 Gehe zu Bookmark 1
- CTRL-2 Gehe zu Bookmark 2
- ...
- CTRL-0 Gehe zu Bookmark 10

File Operations

- CTRL-N New
- CTRL-S Save
- CTRL-D Print

6 Installation, Uninstallation, Updates

6.1 Install AB-Edit

How to install AB-Edit to your system:

1. AB-Edit will usually be delivered as a self-extracting archive named *AB-Edit.exe*. To install the product, just execute this file, e.g. by double clicking on the file in the Windows Explorer. If you have received the product on disk, insert the disk in your floppy drive and type in *A:\Setup.exe* after selecting *Start, Run*. If you have received the product on compact disc, insert the disc in your compact disc drive and enter *D:\Setup.exe* after selecting *Start, Run*, where D: should be the letter of your compact disc drive.
2. An installation wizard will guide you through the entire installation, copy the required files to your hard disk and initialize the application for you. If you are not sure in answering the wizard's questions, simply use the predefined values. All preferences can be changed later.

Note

- System requirements: Windows 95, 98, ME, NT 4, 2000 or XP

6.2 Uninstall AB-Edit

How to uninstall AB-Edit from your system:

1. Exit AB-Edit.
2. Start the Control Panel applet Add/Remove Programs (*Start, Settings, Control Panel, Add/Remove Programs*).
3. From the list of installed applications, select *AB-Edit* and press *Change/Remove* (Windows 9x/Me: *Add/Remove*). AB-Edit will be uninstalled now.
4. AB-Edit will now be completely removed from your system.

Note

- AB-Edit does not modify any Windows system files!

6.3 Obtaining Updates for AB-Edit

How to obtain updates for AB-Edit:

To obtain updates, new product versions or product enhancements for AB-Edit, please visit the AB-Edit download pages:

<http://www.o-grahl.com/ab-edit/download/>
(AB-Edit Download pages - Updates)

6.4 Installing Updates for AB-Edit

How to install updates for AB-Edit:

1. Exit AB-Edit.
2. Run the file *AB-Edit.exe* with the new version of AB-Edit, i.e. by double-clicking the file in the Windows Explorer.
3. Install the application into the same folder you have selected when installing the previous version. The installation wizard will default to that folder.

Note

- You do not need to uninstall AB-Edit before installing a new version.
- Your AB-Edit Preferences will be taken from the previous version.

7 Register, Order

7.1 Terms of License

Terms of License for AB-Edit ("Software")

Copyright © 1996-2002 by Oliver Grahl Software Design

Revision: 27.06.2002

Please pay attention to the following notes before you start using this software. If you do not agree with the following, do not use the software and remove it from your storages.

License Agreement

AB-Edit is Freeware. You may use this software for free as long as you want.

Reproduction and Distribution

You are allowed to distribute this software complete of all files to others. You are not allowed to add, remove or change any of these files. This software and the attached documentation can not be distributed together with commercial software. For this you need to be authorized by the manufacturer.

Product Support

As a user of this software you may not claim for product support by the manufacturer. Anyway, the manufacturer will make an effort to answer support requests. Product support can be provided exclusively by e-mail. It is only possible to handle requests which are using the form you can find on the support page on our website. Before transmitting your support request please read our hints. Probably you will be able to find a solution to your problem and you don't need to contact us. Only completely compiled forms can be accepted and provided an answer. Very important is that you indicate the correct version of the software.

Limited Warranty

This software is provided on an "as is" basis. To the maximum extent permitted by applicable law, the manufacturer disclaims all warranties relating to this software, whether expressed or implied, including but not limited to any implied warranties of merchantability or fitness for a particular purpose. To the maximum extent permitted by applicable law, in no event shall the manufacturer or its suppliers be liable for any damages whatsoever (including without limitation, special, incidental, consequential, or indirect damages for personal injury, loss of business profits, business interruption, loss of business information, or any other pecuniary loss) arising out of the use of or inability to use the software, even if the manufacturer has been advised of the possibility of such damages.

In no event shall any theory of liability exceed the license fee paid to the manufacturer.

Some jurisdictions do not allow limitation or exclusion of incidental or consequential damages, so the above limitations or exclusion may not apply to you to the extent that liability is by law incapable of exclusion or restriction.

Other Provisions

The license agreement for this software may be modified if necessary. Therefore the license agreement under which the software has been delivered will be applied.

Should one or more provisions of this agreement be or become invalid, all other license agreements and provisions remain valid. Invalid provisions have to be replaced by others which are equal for the economical contents.

All mentioned trademarks and copyrights are property of the relative owner.

In case that the client is commercial user, court of jurisdiction is Landshut, Germany.

7.2 Prices

Price list valid until 01.01.2003:

AB-Edit Standard Edition	free
AB-Edit Professional Edition Registration key via email, without CD/Disk	19,95 EUR

Note

You will find a current price list online on the internet:

<http://www.o-grahl.com/ab-edit/reg/>
(AB-Edit Order Center - Register - Order)

Please ask for multiple licenses from 5 licenses on.

8 Contact, Product Support

8.1 Product Support

How to get Product Support on AB-Edit:

- As a user of this software you may not claim for product support by the manufacturer. Anyway, the manufacturer will make an effort to answer support requests. Product support can be provided exclusively by e-mail. It is only possible to handle requests which are using the form you can find on the support page on our website. Before transmitting your support request please read our hints. Probably you will be able to find a solution to your problem and you don't need to contact us. Only completely compiled forms can be accepted and provided an answer. Very important is that you indicate the correct version of the software.
- We cannot guarantee that we will answer your support inquiry in a certain time frame or that any problem can be solved by our answer.
- Support inquiries of not registered users will also be answered, but with lower priority.

You may find the AB-Edit Support Area on:

<http://www.o-grahl.com/ab-edit/support/>
(AB-Edit Support Area - Product Support)

Note

- You will find the current version number of your AB-Edit installation by selecting *Help, About AB-Edit...* from the AB-Edit Menu.

8.2 Contact

Vendor:

Oliver Grahl Software Design
Nikolastr. 46 c
84034 Landshut
Germany
<http://www.o-grahl.com>

IMPORTANT: Do not send any support questions or orders to this address! For support questions, please read the topic Product Support.

Your comments, ideas or any other inquiry are welcome anytime and will be answered as soon as possible.

Revision: 07.11.2002

8.3 Information on the WWW

You will find more information on this and other products from us on our company website:

<http://www.o-grahl.com>
(Oliver Grahl Software Design Website)

Some areas of the AB-Edit website can be reached directly:

<http://www.o-grahl.com/ab-edit/>
(AB-Edit Website)

<http://www.o-grahl.com/ab-edit/support/>
(AB-Edit Support Area - Product Support)

<http://www.o-grahl.com/ab-edit/download/>
(AB-Edit Download Pages - Updates)

<http://www.o-grahl.com/ab-edit/reg/>
(AB-Edit Order Center - Register - Order)

<http://www.o-grahl.com/ab-edit/faq/>
(AB-Edit Tips and Tricks - Frequently Asked Questions - FAQ)

Index

A

AB-Edit 3, 5, 6, 7, 20
Address 25
ANSI 17, 19

B

Bookmarks 15, 19, 20
Buy 24, 25

C

Close 4
Command line 4, 5, 21
Contact 25
Customize 11, 12, 13, 14, 21

E

Edit 8
Editor 5, 6
Encoding 17, 19
Exit 4

F

Features 5, 6, 7, 14, 20
File 8
File encoding 17, 19
File format 17, 19, 20
Format 17, 19, 20

G

Goto 15, 17, 19, 20

H

Help 10

Homepage 26
Hotkeys 11, 22

I

Impressum 25
Indent 15
Installation 23
Internet 26
Introduction 3

K

Keyboard shortcuts 11, 22
Keys 11, 22

L

Languages 18
License 24
Link 5

M

Mac 17, 19, 20
Menu 5, 7
 Customize 11
 Edit 8
 File 8
 Help 10
 View 10

N

Navigation 15, 17, 19, 20

O

Options 20
Order 24, 25
Outdent 15
Overview 3, 5, 6, 7, 14

P

Parameter 4, 5, 21
Preferences 20
Pricelist 25
Prices 25
Print 18
Product support 25
Program start 3, 4, 5, 21
Programming languages 18

R

Register 24, 25
Replace 16
Run 3

S

Search 15
Settings 20
Shareware 24, 25
Start 3, 4, 5, 21
Start parameter 4, 5, 21
Support 25
Syntax highlighting 18

T

Terms of license 24
Toolbars 13
 create 13
 customize 11
 edit 13, 21
 hide 12
 move 12
 Options 14
 show 12

U

Unicode 17, 19
Unindent 15
Uninstallation 23
Unix 17, 19, 20

Updates 23
UTF-8 17, 19

V

View 10

W

Website 26
Windows 5, 17, 19, 20
WWW 26